



RESPOSTAS

1. (a)  $y = \frac{9x^3 + 6x^2 + 6x + 5}{3x + 2}, x \neq -\frac{3}{2}$

(d)  $y = 9x^3 + 6x^2 + 6x + 4, x \neq -\frac{2}{3}$

(b)  $y = \frac{1}{3x^2 + 2}$

(e)  $y = \frac{1}{9x^3 + 6x^2 + 6x + 4}, x \neq -\frac{2}{3}$

(c)  $y = \frac{3x^2 + 2}{3x + 2}, x \neq -\frac{2}{3}$

(f)  $y = \frac{18x^2 + 24x + 11}{9x^2 + 12x + 4}, x \neq -\frac{2}{3}$

2. (a)  $y = \frac{6x - 2x^2 - 6}{x^2}$

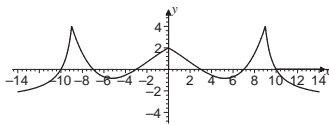
(b)  $y = \frac{9x - 3x^2 - 3}{3 - x}$

(c)  $y = \frac{4x - 3}{3 - x}$

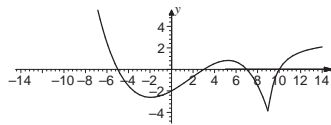
3. (a)  $(f \circ g)(x) = \begin{cases} -\frac{1}{x} & , x < 0 \\ x & , x \geq 0 \end{cases}$

(b)  $(g \circ f)(x) = \begin{cases} \sqrt{-x} & , x < 0 \\ x & , x \geq 0 \end{cases}$

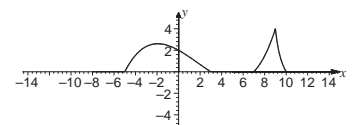
4.



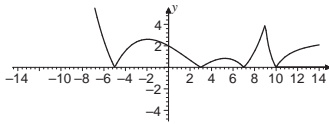
7.



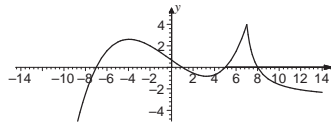
10.



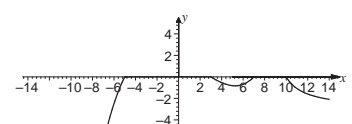
5.



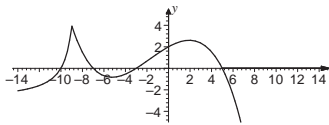
8.



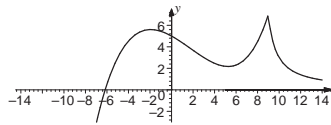
11.



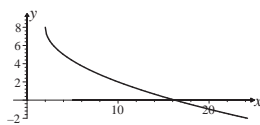
6.



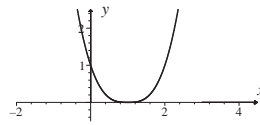
9.



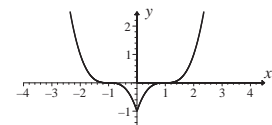
12.



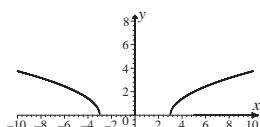
14.



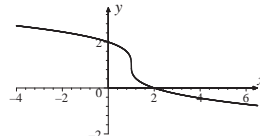
16.



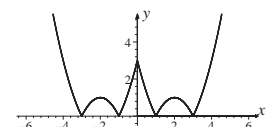
13.



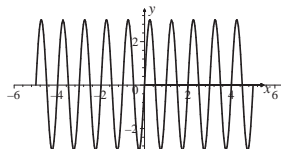
15.



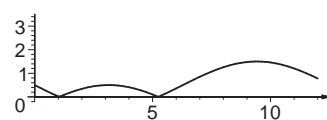
17.



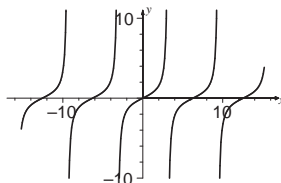
18.



20.



19.



21.

